

Italian Waters Pilot

10th Edition 2019
ISBN 978 178679 090 3



Supplement No.3
April 2022

Caution

Every effort has been made to ensure the accuracy of this supplement. However, it contains selected information and thus is not definitive and does not include all known information on the subject in hand. The authors and Imray Laurie Norie & Wilson Ltd believe this supplement to be a useful aid to prudent navigation, but the safety of a vessel depends ultimately on the judgement of the navigator, who should assess all information, published or unpublished, available to him/her.

With the increasing precision of modern position fixing methods, allowance must be made for inaccuracies in latitude and longitude on many charts, inevitably perpetuated on some harbour plans. Modern surveys specify which datum is used together with correction figures if required, but older editions should be used with caution, particularly in restricted visibility.

This supplement contains amendments and corrections sent in by a number of cruising yachtsmen and women, in addition to those culled from official sources such as *Notices to Mariners*.

Note where lights have been modified in this text do please remember to alter them on the appropriate plan.

Authors' caution

It must be emphasised that none of the charts, plans or sketch plans shown in this guide should be used for navigation, nor should they be in any way considered as substitutes for the official charts and other nautical reference materials which every vessel is obliged by international law to have on board.

Thanks to everyone who sent in information.

We are always happy to receive information via the publishers.

Correct as at April 2022. © Rod & Lu Heikell

Page 72 Marina della Foce

The inner berths once again named Fiera di Genova and run by Porto Antico.

VHF Ch 69.

Data 320 berths. Max LOA 30m. Depths 5-7m.

☎010 2485678 *email* info@marinafieragenova.it

Outer breakwater berths (superyachts) now known as Waterfront Marina operated by Amico.

Data 26 berths. LOA 25-110m. Depths 7-10m.

www.genovawaterfrontmarina.com

Page 85 Rapallo

Breakwater repair works due for completion in 2022.

Page 99 Marina Molo Pagliari

The marina is now open, but most berths are taken with local boats displaced from Canaletto and Fossamastra with a number of concessions.

Page 126 Marciana Marina

Delete second contact telephone number.

Page 173 Fiumicino

Dangers

2. Least depths 2-3m reported.

Page 196 Marina Cala dell'Acqua

No completion dates available.

Page 292 New plan

La Maddalena (see supplement page 2)

Page 324 Isola di Quirra

Care needed off Capo Murtas, close N of the islet where shoal water extends for some distance.

Page 381 New plan

AMP Capo Milazzo (see supplement page 2)

Page 413 Cantieri Navali Siracusa

Max draught 1.85m.

Page 481 New plan

Marsamxett (see supplement page 3)

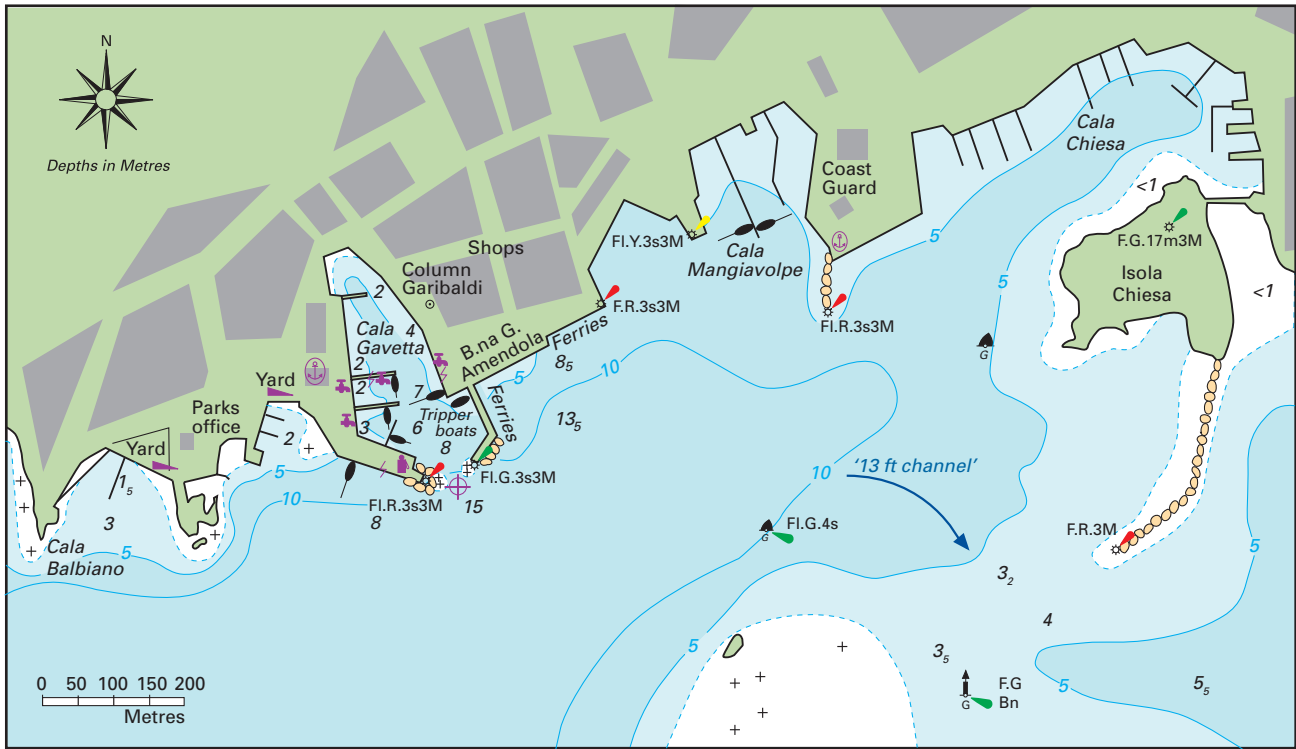
Page 486 Yacht Lift Malta

Hydraulic platform lift (short-term only) in Marina di Valetta. Max 50-T

Email bookings@yachtliftmalta.com

Page 494 New plan

Mgarr and Comino Island (see supplement page 4)



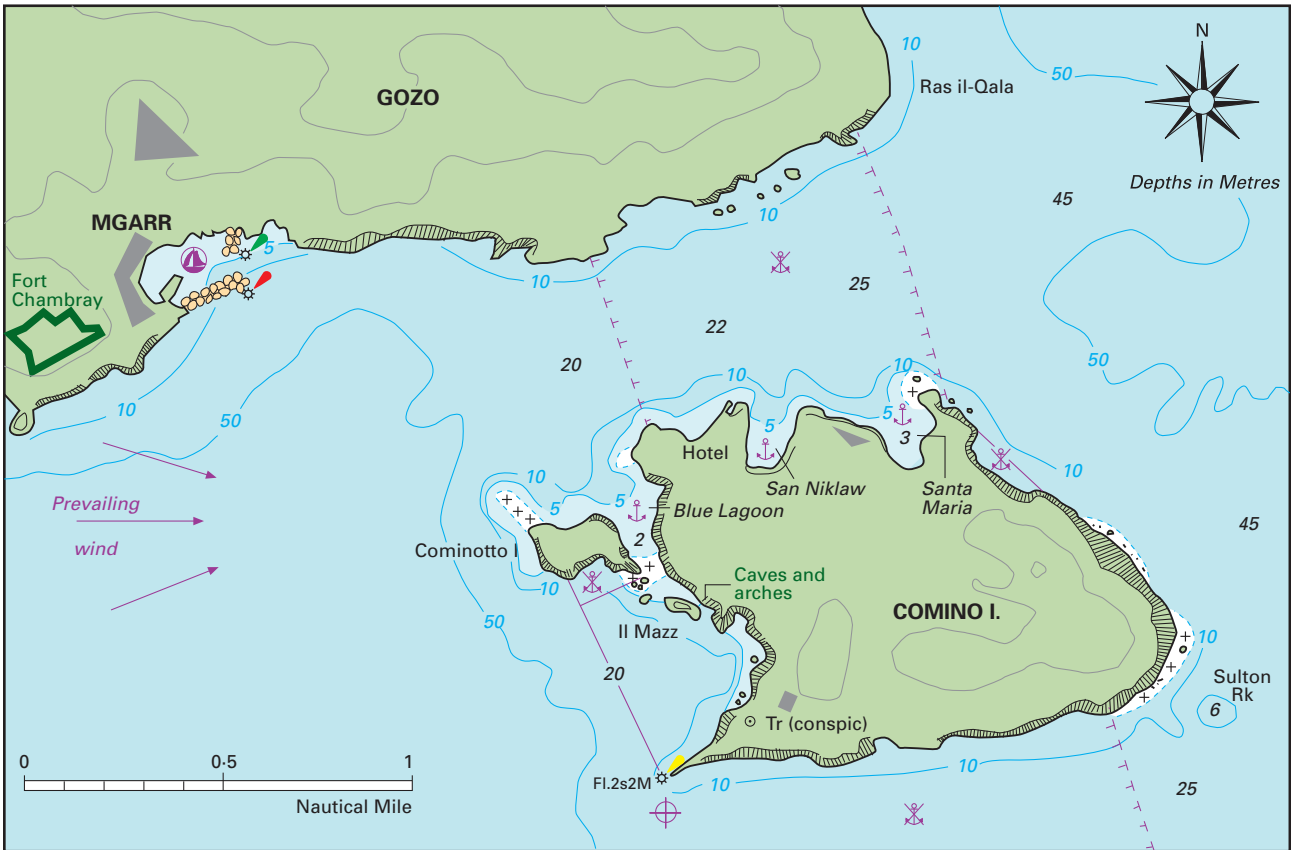
LA MADDALENA
 Ⓢ41°12'·60N 09°24'·31E WGS84



CAPO MILAZZO MARINE RESERVE



MARSAMXETT



MGARR AND COMINO ISLAND

⊕ 36°00'·2N 14°19'·5E



Italian Waters Pilot

10th Edition 2019
ISBN 978 178679 090 3



Supplement No.2
June 2021

Caution

Every effort has been made to ensure the accuracy of this supplement. However, it contains selected information and thus is not definitive and does not include all known information on the subject in hand. The authors and Imray Laurie Norie & Wilson Ltd believe this supplement to be a useful aid to prudent navigation, but the safety of a vessel depends ultimately on the judgement of the navigator, who should assess all information, published or unpublished, available to him/her.

With the increasing precision of modern position fixing methods, allowance must be made for inaccuracies in latitude and longitude on many charts, inevitably perpetuated on some harbour plans. Modern surveys specify which datum is used together with correction figures if required, but older editions should be used with caution, particularly in restricted visibility.

This supplement contains amendments and corrections sent in by a number of cruising yachtsmen and women, in addition to those culled from official sources such as *Notices to Mariners*.

Note where lights have been modified in this text do please remember to alter them on the appropriate plan.

Authors' caution

It must be emphasised that none of the charts, plans or sketch plans shown in this guide should be used for navigation, nor should they be in any way considered as substitutes for the official charts and other nautical reference materials which every vessel is obliged by international law to have on board.

We are always happy to receive information via the publishers.

Correct as at April 2021. © Rod & Lu Heikell

Page 9 Entry formalities

Covid 19

The emergence and spread of a novel coronavirus during 2020 caused millions to become ill and, tragically, over two million to lose their lives. It has dramatically changed the notions of free movement and cross border travel. Many countries have either closed their borders to non-essential travellers, or require evidence of a negative Covid test, or of vaccination, to allow entry. Mandatory quarantine is also common. Sailors must check all current restrictions and requirements when moving within and between countries to ensure they remain within the regulations in place.

Post Brexit Formalities and Regulations

It is likely that 2021 will be a period of adjustment as the authorities, and sailors, become accustomed to the new rules.

VAT Status of UK yachts

It is understood that British registered VAT paid yachts which were lying within the EU on 31/12/2020 will continue to be regarded as EU VAT paid. It means that the transit log should be 'Unlimited' and should not be subject to the 18-month rule. Any yachts which do not fall into this category must respect the 18-month rule, or must pay VAT to import the vessel permanently. The 18-month period may be stopped for up to six months by declaring the yacht 'out of use' and the yacht papers surrendered to the local customs office. When the period of Temporary Admission is up, the vessel must leave EU waters for a recognisable period – it can be as little as 24 hours – but should be backed up by evidence, say a marina receipt.

Immigration

Following Brexit, all UK resident passport holders must be stamped into the EU. Visa-free travel has been agreed within the Schengen Rule where all non-EU visitors are subject to a maximum stay anywhere within the Schengen Area of 90 days in any 180-day period. The best way to think about this is to count back 180 days, noting how many of those days were spent in the Schengen Area. This number must at all times remain under 90 days.

Page 10 Selected European country checklist

Note that Ceuta and Melilla are now considered to be a part of the Schengen area.

Page 13 Other laws for yachtsmen

General note

An Italian maritime law, not often enforced, requires all vessels to call ahead (usually to the Guardia Costiera) to obtain permission to enter a harbour. Most likely to be enforced where pleasure boats must enter a port where

commercial vessels may be manoeuvring. Harbours where this practice appears to be being enforced include: Trapani, Siracusa and Reggio di Calabria.

Page 16 Health

Following Brexit UK citizens may continue to use existing EHIC cards when travelling in the EU. On expiry you may apply for a new GHIC (Global Health Insurance card) which is reported to give the same level of cover through the EU (and possibly other countries like Australia and New Zealand).

Page 48 Ventimiglia

The new marina Carla Del Forte is now fully operational. A new shuttle service is in operation between the marina and Port Hercules, Monaco.

Page 65 Vado Ligure

The new container port is open. Work is in progress on the main S breakwater.

Page 85 Rapallo

Repair works are underway on the damaged breakwater. Completion is expected in 2022.

Page 237 Agropoli

2. Area Transito ☎ 366 3716 316

Page 252 Vibo Valentia

Marina Stella del Sud and Marina Carmelo charge band 5. Azzurra charge band 4.

Page 291 La Maddalena

New berths on pontoons at Cala Balbiano (close SW of Cala Gavetta).

Data 140 berths. Max LOA 40m. Laid moorings.

Marina di Cala Mangiavolpe

☎ 331 865 9946

Email info@marinadicalamagiavolpe.it

Page 305 Marina cala dei Sardi

New breakwater pontoons in place 2021.

Page 332 Marina di Cagliari

☎ 393 874 5577

Page 353 Fertilia

Recent dredging to restore depths as charted.

Page 380

NEW

Area Marina Protetta Capo Milazzo

A new marine reserve encircles the tip of the cape.

There are restrictions on navigation and anchoring. Most vessels under 24m may anchor only in designated sandy areas clear of Posidonia seagrass. Mooring buoys have also been laid. For full details see

www.ampcapomilazzo.it

Page 419 Scoglitti

La Ponente di Monachallo Carmela ☎ 0932 980 860

Email info@laponente.com

Charge band 5.

Page 423 Porto Empedocle

Marina di Porto Empedocle ☎ 392 521 6883

www.marinadiportoempedocle.it

Charge band 5.

Page 477 Malta

A number of new marine reserves have been established around the coast of Malta and Comino. There are restrictions on navigation and anchoring, particularly around Comino and Dwerja. See Malta Notices to Mariners for details.

www.transport.gov.mt (maritime)

Page 484 Ta'Xbiex Quay

Gzira Gardens Yacht Marina is being developed on this part of the quay. Pontoons are being installed. Data 126 berths. Max LOA 50m.

VHF Ch13

☎ 7924 4888

Email info@gardensmarina.com

www.gardensyachtmarina.com

Page 489 St Paul's Bay

A new small craft harbour is planned on the N shore at the head of the bay. New restricted area and speed limit in effect around St Paul's Island down to Ras il-Mignuna.

Page 490 Qrendi – Blue Grotto

Anchoring prohibited in the bay.

Page 492 Plan Malta East Coast

Waypoint missing 1300m N of E cardinal buoy.

Page 494

No anchoring in the bay on S shore of Cominotto, nor in the bay on the NE shore of Comino.



Italian Waters Pilot

10th Edition 2019
ISBN 978 178679 090 3



Supplement No.1
February 2020

Caution

Every effort has been made to ensure the accuracy of this supplement. However, it contains selected information and thus is not definitive and does not include all known information on the subject in hand. The authors and Imray Laurie Norie & Wilson Ltd believe this supplement to be a useful aid to prudent navigation, but the safety of a vessel depends ultimately on the judgement of the navigator, who should assess all information, published or unpublished, available to him/her.

With the increasing precision of modern position fixing methods, allowance must be made for inaccuracies in latitude and longitude on many charts, inevitably perpetuated on some harbour plans. Modern surveys specify which datum is used together with correction figures if required, but older editions should be used with caution, particularly in restricted visibility.

This supplement contains amendments and corrections sent in by a number of cruising yachtsmen and women, in addition to those culled from official sources such as *Notices to Mariners*.

Note where lights have been modified in this text do please remember to alter them on the appropriate plan.

Authors' caution

It must be emphasised that none of the charts, plans or sketch plans shown in this guide should be used for navigation, nor should they be in any way considered as substitutes for the official charts and other nautical reference materials which every vessel is obliged by international law to have on board.

General note

An Italian maritime law, not often enforced, requires all vessels to call ahead (usually to the Guardia Costiera) to obtain permission to enter a harbour. Most likely to be enforced where pleasure boats must enter a port where commercial vessels may be manoeuvring. Harbours where this practice appears to be being enforced include: Trapani, Siracusa and Reggio di Calabria.

Page 65 Vado Ligure

The new container terminal has been completed and huge loading cranes are being delivered.

Page 72 Genoa

Amico Shipyard
4000-T shiplift.

Page 118 Cavo

SVAMAR no longer operating here.

Rio Marina

Porto Turistico ☎ 0565 176 6349
Email marina@marinario.it

Page 121 Marina Porto Azzurro

VHF Ch 10
Email marina@marinadiportoazzurro.com

Page 135 Viareggio

Lusben Yard
☎ 0584 3801
www.lusben.com

Page 147 Canale di Piombino plan

Punta Ala light
Fl(4)30s90m23M 232°-vis-134° Obscured over Isola
Giannutri.

Page 147 Piombino

South breakwater Fl.R.3s8M

Page 212 Marina di Stabia

☎ 081 871 6871

Page 360 Major lights

Isola di Linosa

Punta Arena Bianca Fl.5s9m9M 276-5°-vis-150°
Punta Beppe Tuccio Fl(4)20s32m16M 107°-vis-345° this arc varies with distance from light, at 6M
103°-vis-346° Reserve light range 12M
Isolotto Lampione Fl(2)10s40m10M

Isola di Lampedusa

Capo Ponente Fl(3)15s110m8M 290°-vis-222°
Capo Grecale Fl.5s82m22M 112°-vis-075° Reserve light range 11M
Porto de Lampedusa Punta Maccaferri Fl.G.3s17m8M
Punta Guitgia Fl.R.3s14m8M
Punta Favaloro breakwater head Fl.R.5s7m7M Safety distance 15M

Isola di Pantelleria

Punta Spadillo Fl(2)10s50m24M Reserve light 11M

Scauri Fl.5s18m10M

Punta san Leonardo Fl.3s21m15M Reserve light range 8M

W end Fl.Y.2s8m5M

Punta Limarsi Fl(3)15s35m7M

Punta Trácino (Tracia) Fl(2)10s49m10M

Page 386 **Cala Junca**

The entrance to the bay is now bouyed off preventing access.

Page 395 **Gelso**

Intrusively loud music from the café ashore.

Page 416 **Porto Palo**

We are reliably informed that the red buoy is no longer in place.

Page 421 **Licata**

Porto Turistico Marina di Cala del Sole

☎ 0922 183 7134

Email info@portoturisticoLicata.com

Popular over-wintering.

Page 431 **Isola di Lampione**

Light Fl(2)10s40m10M

Page 474 **Malta History**

DCG was killed near her house on Malta, not Gozo.

Page 485 **Manoel Island Marina**

It is reported that the marina is planning to close for a period during 2020 for further development work. It is expected that the marina will re-open but timelines are sketchy. Part of the development looks likely to reduce space in the boatyard here.

Acknowledgements

With kind thanks to David Youngman *S/Y Galloper*.